

# Environmental Insight



## Navy Volunteers Keeping Our Spaces Clean

More than 50 participants collected 105 pounds of materials on April 23, 2025 at Naval Station Everett.

Also, mulch rings were installed on April 26, 2025 at Naval Radio Station Jim Creek Recreation Area.

Thank you to all the sailors and civilians who showed up and contributed to enhancing the beauty and water quality at NAVSTA Everett and NAVRS Jim Creek!

Bravo Zulu!



Keeping our spaces clean and safe for use supports mission resiliency and improving quality of life.



Environmental Policy and Plans as well as previous Newsletters are located at:

<https://cnrnw.cnic.navy.mil/Installations/NS-Everett/Operations-and Management/Environmental-Support-and-Compliance/>



In This Edition...

Pg. 1. Stormwater

June 2025

Pg. 2. Stormwater cont'd

Volume 6, Issue 2

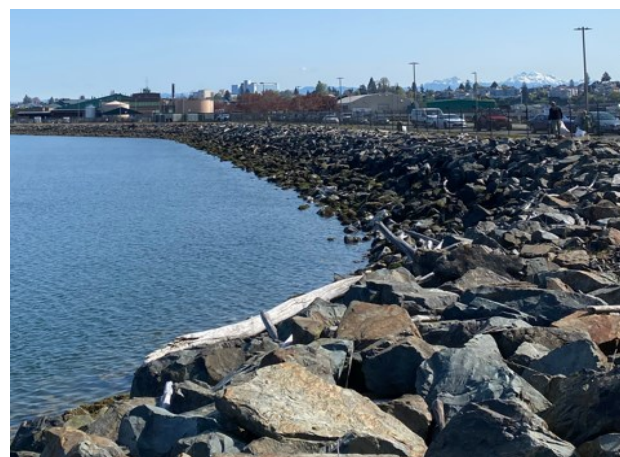
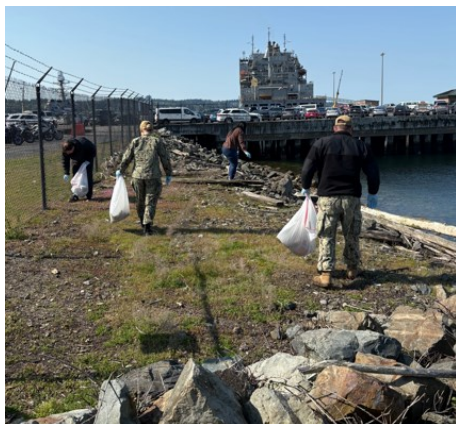
Pg. 3. Recycling

Quarterly

**NSE Environmental Staff**

Environmental Office: (425) 304-3470

Program	Phone
Spills	(425) 304-3465
Natural Resources	(425) 304-3464
Stormwater, Wastewater, & UST/AST	(425) 304-3277
Air & Drinking Water	(425) 304-3466
Recycling	(425) 304-3071
Hazardous Waste	(425) 304-5987

**MS4 Education Materials**

A large part of our MS4 Stormwater Permit is public outreach and education. You will notice some outdoor stormwater signage and indoor postings around the base which is meant to educate and remind base personnel of the Navy's commitment to stormwater compliance. The intent is to provide positive reinforcement as well as provide our contact information for reporting spills. Our program has both the pictured magnets available for posting on refrigerators in your command. If a command representative would like to come by and pick some up, please let us know so we can arrange a time to meet you. Please help us keep these magnets attached to refrigerators and postings posted. EWCCs are our conduit to the tenant commands on base, and your support of our environmental programs goes a long way in ensuring your command's understanding and compliance. If you need additional magnets or replacements, please let us know.



## Recycling: Shredded Paper



Did you know that you may recycle the shredded paper your workspace generates? Shredded paper should always be placed into a plastic bag and put into your blue recycling bin. Please do not put loose shred into a recycling bin. When emptying containers with loose shred, it creates a mess and generates a lot of nuisance dust. Always bag it!

Shredded paper that is fine or pulverized is mixed with our food waste as it goes out to be composted. Thicker shredded paper is baled with our mixed paper and recycled. Please keep any shredded plastic materials separate and place directly into your dumpster.

Composting or recycling your shredded paper is still cheaper than sending it to the landfill; and there is the added benefit to the Environment. It is win, win, when you bag it for the Recycle Program.

If you are planning to shred many papers, please contact the Integrated Solid Waste Office (ISW) at 304-3071. They will deliver additional recycle containers or be ready for a drop off if you plan to bring it to building 2331, to keep your spaces clear.



**Help keep wildlife wild and healthy.** Please do NOT feed wildlife on base such as ducks, geese, gulls, raccoons, rabbits, squirrels, etc.. One way you can help reduce wildlife conflicts with people is by not feeding wildlife near human populations.